



Characteristics

- **150 W PoE Budget:**
8× 802.3at/af-compliant PoE+ ports with a total power supply of 120 W.
- **Full Gigabit Ports:** 8× gigabit PoE+ ports and 2× gigabit SFP provide high-speed connections.
- **Robust Security Strategies:** IP- MAC-Port Binding, ACL, Port Security, DoS Defend, Storm control, DHCP Snooping, 802.1X, Radius Authentication, and more.
- Switching Capacity 20Gbps
- Supports Web-based GUI, Command Line Interface (CLI) through telnet, SNMP

Description

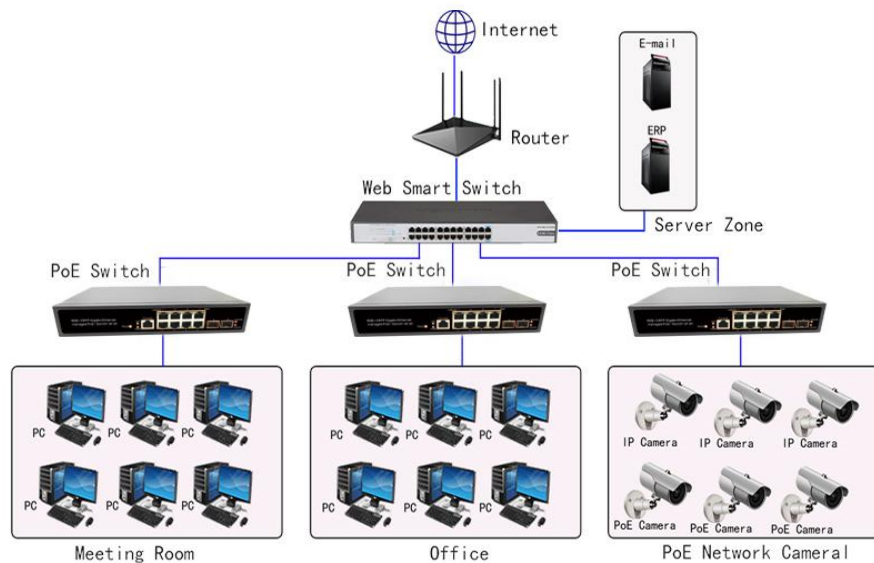
NB-GS3210FP from Newbridge is a layer 2 plus managed switch equipped with 8 gigabit RJ45 ports and 2G SFP. All RJ45 Ports support the 802.3af/at (PoE+) standard, supplying total PoE power of 150W.

With abundant layer 2+ management features supported, the ND-GS3210FP is capable of delivering high throughput to even the most demanding edge-of-network workgroups, while in small networks it can act as a backbone for gigabit switches and high-speed servers. 2 SFP slots provide greater network flexibility.

The NB-GS3210FP is designed exclusively for the networking needs of growing businesses, with an extensive suite of management and security features available. These devices are cost-effective for small and medium-sized businesses, providing ideal solutions for a variety of network scenarios.

The application of topology

Application



Features

- Supports IEEE 802.3i, IEEE 802.3u, IEEE802.3ab, IEEE802.3z, IEEE802.3x, IEEE802.3at, IEEE802.3af, IEEE802.3az.
- Supports PoE power up to 30W for each PoE port, all power up to 150W.
- 8× gigabit PoE+ ports and 2× gigabit SFP.
- Supports MAC address auto-learning and auto-aging.
- Store and forward mode operates.
- LED indicators for monitoring power, link/activity
- Support QoS, port mirroring, link aggregation protocol.
- 19 inches full metal iron shell and internal power adapter design, suitable for rack installation.

Hardware Specification

Model	NB-GS3210FP
Chipset	RTL8380M+TPS23861*2
Standards	IEEE 802.3i , IEEE 802.3u , IEEE802.3ab , IEEE802.3x , IEEE802.3az, IEEE802.3af 、 IEEE802.3at
Number of Ports	8 x 10/100/1000Mbps ports 2 x 1000Mbps SFP ports 1x Console port
Network Media (Cable)	10Base-T: UTP category 3, 4, 5 cable (maximum 100m) 100Base-Tx: UTP category 5, 5e cable (maximum 100m) 1000Base-T: UTP category 5e, 6 cable (maximum 100m) 1000Base-X:MMF,SMF
Transfer Method	Store-and-Forward
MAC Address Table	8K
Switching Capacity	20Gbps
Packet Forwarding Rate	41.67Mpps
Packet Buffer	4.1Mbit
Jumbo Frame	12KBytes
PoE Ports(RJ45)	8x PoE ports compliant with 802.3at/af
Power Pin Assignment	1/2(+),3/6(-)

PoE Budget	150W@100~260VAC,50/60HZ	
Indicators	Per Device	Power, System
	Per Port	Link/Activity,
Power Supply	100~240VAC,50/60HZ,150W	
Power Consumption	Maximum(PoE on): 150W	
Dimensions (W×D×H)	230x150x44.5mm (11" metal case)	
Environment	Operating Temperature: 0℃~45℃ Storage Temperature: -40℃~70℃ Operating Humidity: 10%~90% non-condensing Storage humidity: 5%~90% non-condensing	

Software Specification

L2 Features		Support
MAC Address Table		8K
Jumbo Frame		10K (10000)
Flow Control	802.3x (Full-duplex)	Yes
	Back-Pressure (Half-duplex)	Yes
Spanning Tree	IEEE 802.1D (STP)	Yes
	IEEE 802.1w (RSTP)	Yes
	IEEE 802.1s (MSTP)	16 instances
	Auto Edge Port	Yes
	BPDU Filtering	Yes
	ERPS	Yes
	Self Loop Detection	Yes
Link Aggregation	IEEE 802.3ad LACP	Yes
	Static Trunk	Yes
	Max. Group	8
	Max. Ports/Group	8
	Traffic Load Balancing	Yes

Static Routing		Yes (IPv4/IPv6)
Address Resolution Protocol (ARP)	Static ARP	Yes
VLAN		
VLAN	Static VLAN	256
	Port-based	Yes
	IEEE 802.1Q Tagged-based	Yes
	Protocol-based	8 groups
	MAC-based	256
Voice VLAN	OUI Mode (Auto/Manual)	16 OUI
Surveillance VLAN	OUI Mode (Auto/Manual)	16 OUI
QinQ (IEEE 802.1ad)	Basic	Yes
GARP VLAN Registration Protocol (GVRP)		Yes
Multicast		
Common	Multicast Groups	256
	Immediate Leave	Yes
	Static/Forbidden Router Port	Yes
	Static/Forbidden Forward Port	Yes
	Filtering	128 profiles
	Throttling	Yes
IGMP Snooping	IGMP v1/v2	Yes
	IGMP v3 Basic (BISS)	Yes
	IGMP v2/v3 Querier	Yes
MLD Snooping	MLD v1/v2	Yes
Multicast VLAN Registration (MVR)		Yes (IPv4)
QoS Features		
Priority Queue		8 queues/port
Queue Scheduling	WRR	Yes
	WFQ	Yes
	Strict Priority	Yes
	Hybrid(WRR+SP or WFQ+SP)	Yes
Class of Service	Port-based	Yes
	802.1p	Yes
	IP TOS Precedence	Yes
	IP DSCP	Yes
Trusted QoS		Yes
Rate Limit	Port-based (Ingress/Egress)	Yes

Access Control List (ACL)		
Access Rules		1024
ACL Type	L2/L3/L4	Yes
	MAC-based	512
	IPv4-based	
	IPv6-based	
PoE Function	Power	Yes
	Current	Yes
	Voltage	Yes
	PoE Watch Dog	Yes
Security		
AAA	Authentication	Yes
TACACS+		8
RADIUS		8
Authentication Manager	IEEE 802.1X	Yes
	MAC Auth	Yes
	Web Auth	Yes
	Guest VLAN	Yes
	Port-based	Yes
	Host-based	Yes
Account Manager	Local Authenticoitin	Yes
	Multiple User Account	8
	Multi-Level Security (Manager/Operator)	Yes
	Password Recovery Procedures	Yes
Management Access	Management VLAN	Yes
	Management ACL	256
SSL	SSLv2	Yes
	SSLv3	Yes
	TLSv1	Yes
WebUI	HTTPS	Yes
CLI	SSH v1/v2	Yes
Port Security	Dynamic Lock	256
Storm Control	Broadcast	Yes
	Unknown Multicast	Yes
	Unknown Unicast	Yes
Spanning Tree	BPDU Guard	Yes
Protected Port (Port Isolation)		Yes
Black Hole MAC		Yes
CPU Defence Engine		Yes
DoS Prevention		Yes
DHCP Snooping (with Option 82)		Yes

Dynamic ARP Inspection	Yes
IP Source Guard	256
IP/MAC/Port Binding (IMPB)	Yes
Dynamic VLAN Assignment	Yes

IPv6		
IPv6 Host	Auto Configuration	Yes
	Static IPv6 Address and Prefix Length	Yes
	Static IPv6 Default Gateway	Yes
	IPv6 Neighbor Discovery (ND)	Yes
	IPv6 Duplicate Address Detection	Yes
	ICMPv6	Yes
IPv6 Application	HTTP/HTTPS	Yes
	TELNET	Yes
	SSH	Yes
	SNMP	Yes
	TFTP	Yes
	Syslog	Yes
	PING	Yes
	DHCPv6	Yes
Management		
CLI	Console	3 sessions
	Telnet (RFC854)	
WebUI	HTTP	Yes
SNMP	v1	Yes
	v2c	Yes
	v3	Yes
File Management	Firmware Upgrade/Backup	Yes
	Dual Images	Yes
	Configuration Download/Backup	Yes
	Multiple Configurations	Yes
Upload/Download	TFTP (RFC783)	Yes
	HTTP	Yes
	UART	Yes
Time Management	Local	Yes
	SNTP	Yes
Port Management	Friendly Port Name (Port Description)	Yes
	Error Disabled Recovery	Yes
	Console	Yes

Line Management	Telnet (RFC854)	Yes
	SSH v1/v2	Yes
DHCP	Client	Yes
DNS	Client	Yes
Software Reset Button		Yes
EEE (802.3az)		Yes
RMON Management		32 entries / type
Discovery		
IEEE 802.1AB Link Layer Discovery Protocol (LLDP)		Yes
ANSI/TIA-1057 LLDP Media Endpoint Discovery (LLDP-MED)		Yes
Diagnostics		
Mirroring	Port-based (Many to One)	4 sessions
Syslog (RFC3164)	Local RAM	Yes
	Local Flash	Yes
	Remote Server	8
System Diagnostics	CPU Utilization	Yes
	Memory Utilization	Yes
	Port Utilization	Yes
	Technical Support Log	Yes
Port Diagnostics	Cable Test	Yes
	Fiber Module Status	Yes
Network Diagnostics	Ping Test	Yes
	Traceroute	Yes
UDLD		Yes
MIB		
RFC1213 MIBII (System & Interface groups)		Yes
RFC2819 RMON I (1,2,3, & 9 groups)		Yes
RFC1215 Generic Traps		Yes
RFC1493 Bridge		Yes
RFC2674 Bridge MIB Extensions		Yes
RFC2737 Entity		Yes
RFC3635 Ethernet-Like		Yes
RFC2863 Interface Group		Yes
SNMP-Community-MIB		Yes
SNMPv3-MIB		Yes